

SITE LIGHTING SCHEDULE (AQUARIUM)

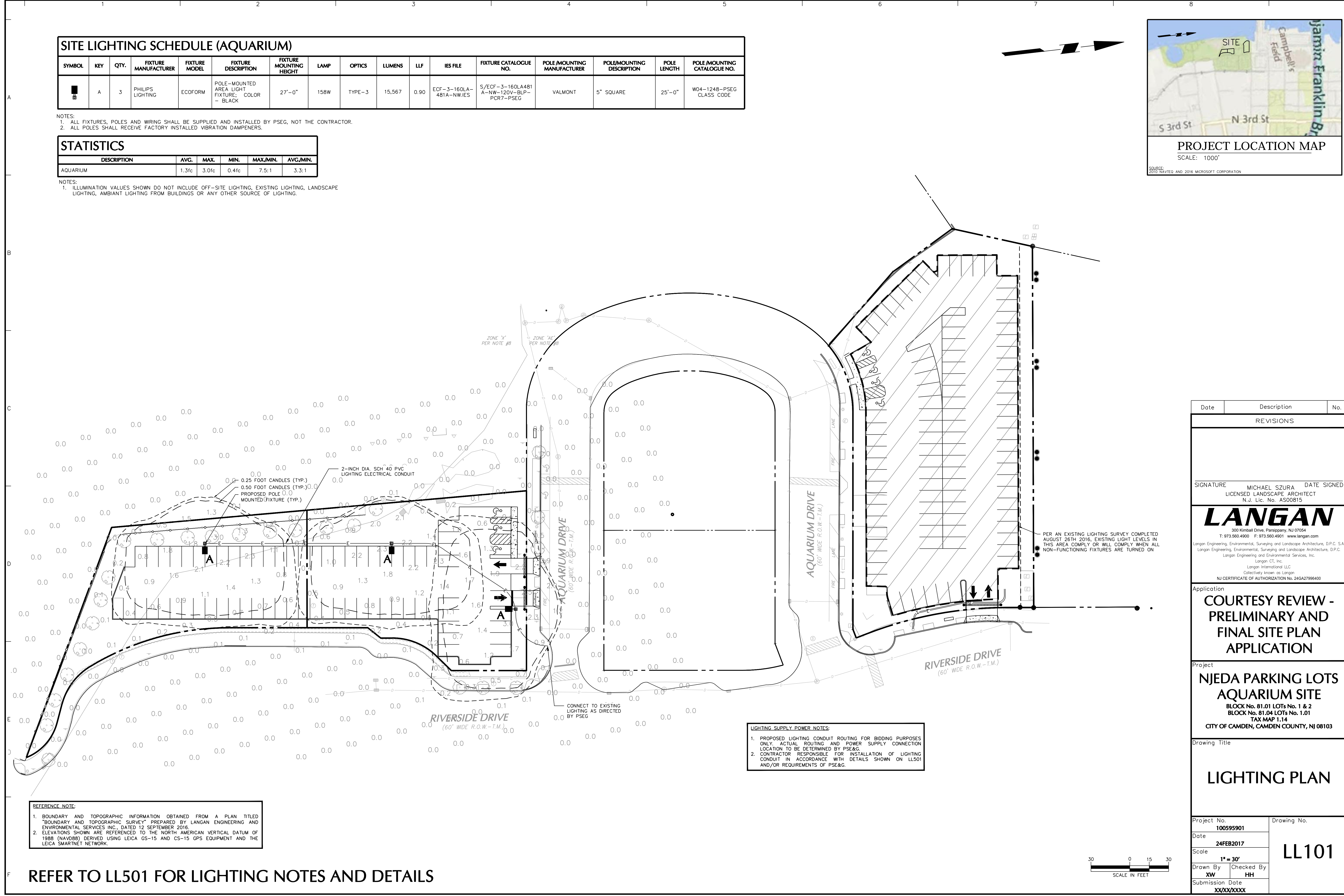
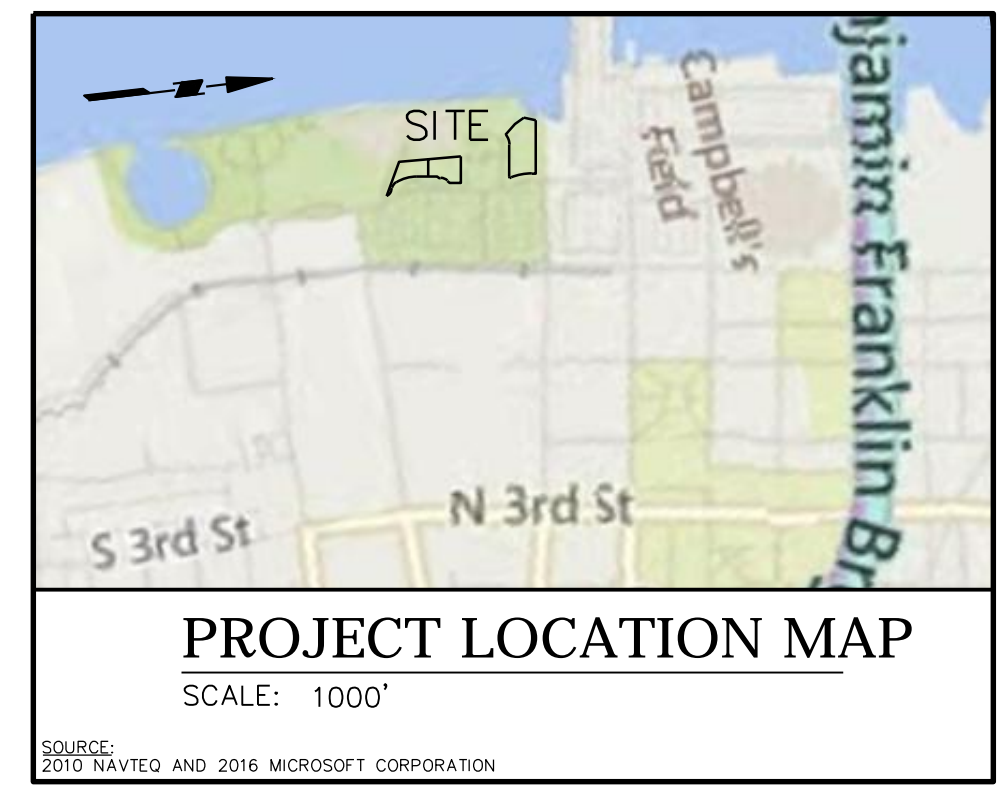
SYMBOL	KEY	QTY.	FIXTURE MANUFACTURER	FIXTURE MODEL	FIXTURE DESCRIPTION	FIXTURE MOUNTING HEIGHT	LAMP	OPTICS	LUMENS	LLF	IES FILE	FIXTURE CATALOGUE NO.	POLE/MOUNTING MANUFACTURER	POLE/MOUNTING DESCRIPTION	POLE LENGTH	POLE/MOUNTING CATALOGUE NO.
	A	3	PHILIPS LIGHTING	ECOFORM	POLE-MOUNTED AREA LIGHT FIXTURE; COLOR - BLACK	27'-0"	158W	TYPE-3	15,567	0.90	ECF-3-160LA-481A-NW.IES	S/ECF-3-160LA481A-NW-120V-BLP-PCR7-PSEG	VALMONT	5" SQUARE	25'-0"	W04-1248-PSEG CLASS CODE

- NOTES:
 1. ALL FIXTURES, POLES AND WIRING SHALL BE SUPPLIED AND INSTALLED BY PSEG, NOT THE CONTRACTOR.
 2. ALL POLES SHALL RECEIVE FACTORY INSTALLED VIBRATION DAMPENERS.

STATISTICS

DESCRIPTION	AVG.	MAX.	MIN.	MAX./MIN.	AVG./MIN.
AQUARIUM	1.3fc	3.0fc	0.4fc	7.5:1	3.3:1

- NOTES:
 1. ILLUMINATION VALUES SHOWN DO NOT INCLUDE OFF-SITE LIGHTING, EXISTING LIGHTING, LANDSCAPE LIGHTING, AMBIANT LIGHTING FROM BUILDINGS OR ANY OTHER SOURCE OF LIGHTING.



LIGHTING SUPPLY POWER NOTES:
 1. PROPOSED LIGHTING CONDUIT ROUTING FOR BIDDING PURPOSES ONLY. ACTUAL ROUTING AND POWER SUPPLY CONNECTION LOCATION TO BE DETERMINED BY PSE&G.
 2. CONTRACTOR RESPONSIBLE FOR INSTALLATION OF LIGHTING CONDUIT IN ACCORDANCE WITH DETAILS SHOWN ON LL501 AND/OR REQUIREMENTS OF PSE&G.

REFERENCE NOTE:
 1. BOUNDARY AND TOPOGRAPHIC INFORMATION OBTAINED FROM A PLAN TITLED "BOUNDARY AND TOPOGRAPHIC SURVEY" PREPARED BY LANGAN ENGINEERING AND ENVIRONMENTAL SERVICES INC., DATED 12 SEPTEMBER 2016.
 2. ELEVATIONS SHOWN ARE REFERENCED TO THE NORTH AMERICAN VERTICAL DATUM OF 1988 (NAVD88) DERIVED USING LEICA GS-15 AND CS-15 GPS EQUIPMENT AND THE LEICA SMARTNET NETWORK.

REFER TO LL501 FOR LIGHTING NOTES AND DETAILS

Date	Description	No.
REVISIONS		
SIGNATURE		DATE SIGNED
MICHAEL SZURA		
LICENSED LANDSCAPE ARCHITECT		
N.J. Lic. No. AS00815		
LANGAN		
300 Kimball Drive, Parsippany, NJ 07054		
T: 973.560.4900 F: 973.560.4901 www.langan.com		
Langan Engineering, Environmental, Surveying and Landscape Architecture, D.P.C. SA		
Langan Engineering, Environmental, Surveying and Landscape Architecture, D.P.C.		
Langan Engineering and Environmental Services, Inc.		
Langan CT, Inc.		
Langan International LLC		
Collectively known as Langan		
NJ CERTIFICATE OF AUTHORIZATION No. 24GA2799400		
Application		
COURTESY REVIEW - PRELIMINARY AND FINAL SITE PLAN APPLICATION		
Project		
NJEDA PARKING LOTS AQUARIUM SITE		
BLOCK No. 81.01 LOTS No. 1 & 2		
BLOCK No. 81.04 LOTS No. 1.01		
TAX MAP 1.14		
CITY OF CAMDEN, CAMDEN COUNTY, NJ 08103		
Drawing Title		
LIGHTING PLAN		
Project No.		Drawing No.
100595901		LL101
Date		
24FEB2017		
Scale		
1" = 30'		
Drawn By	Checked By	
XW	HH	
Submission Date		
XX/XX/XXXX		

