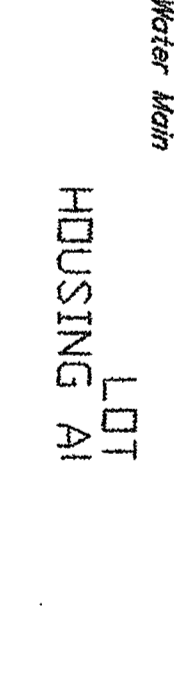
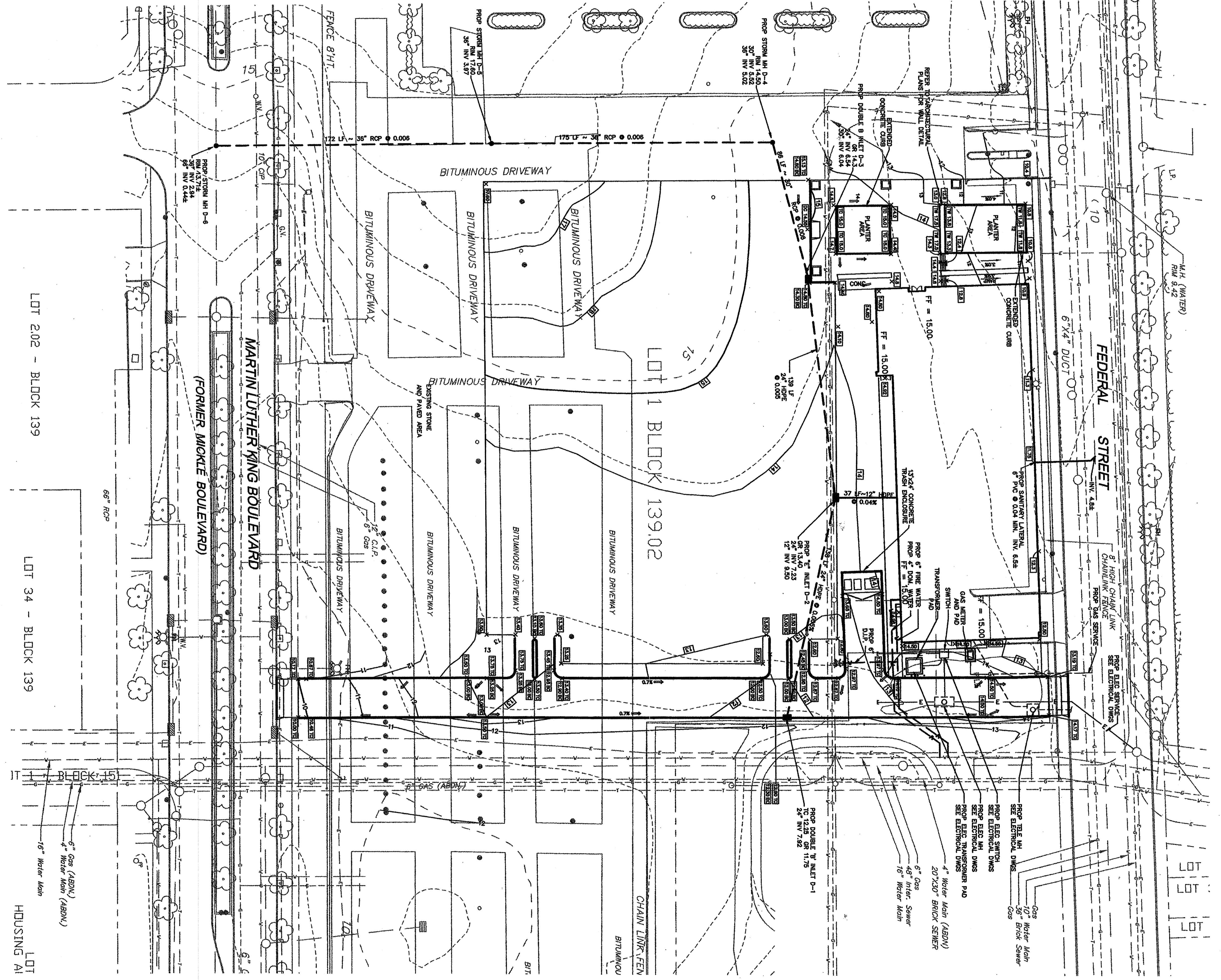
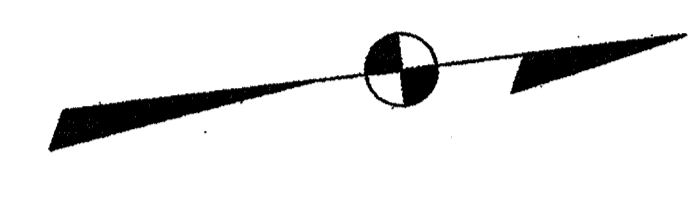
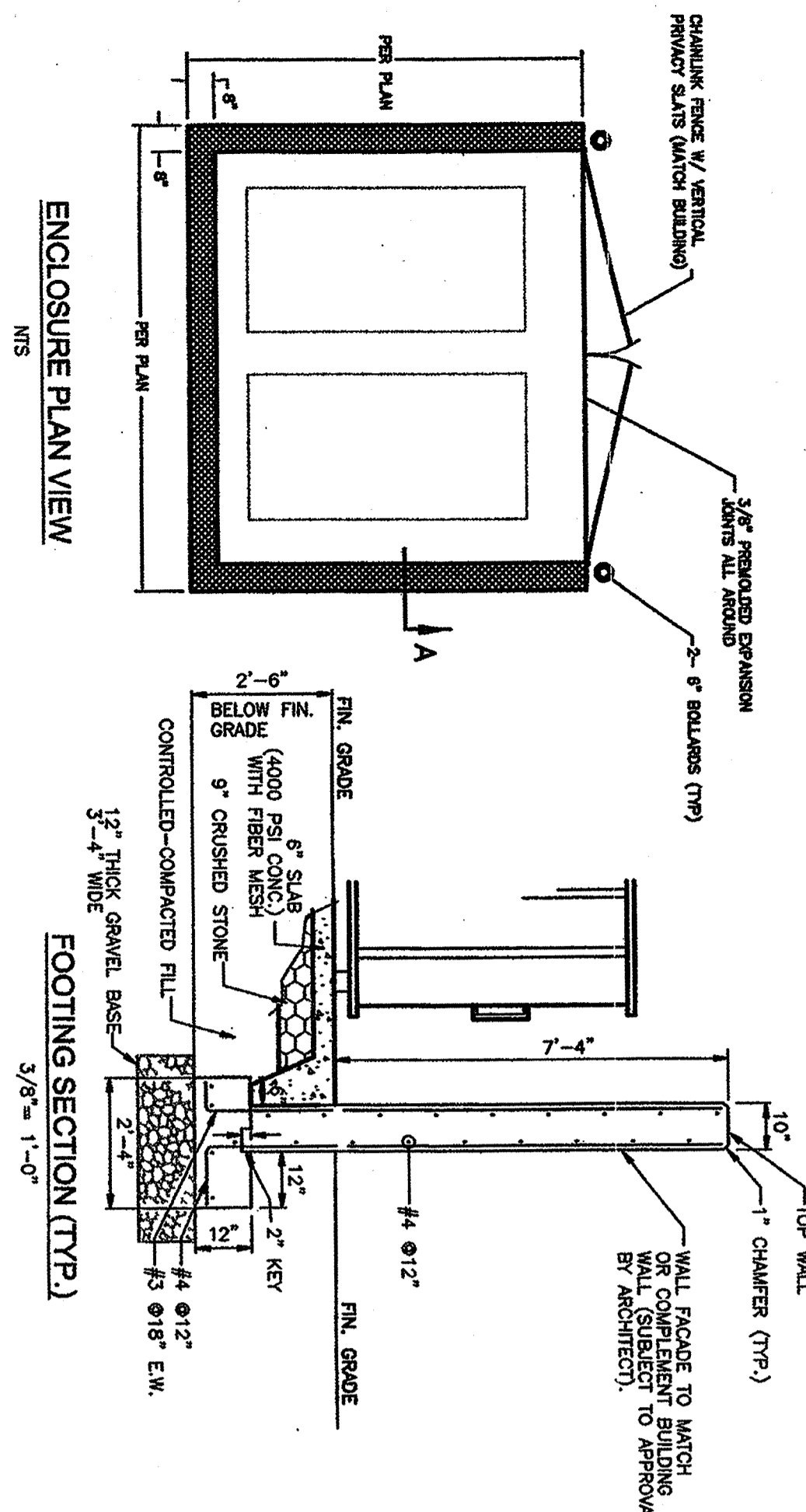
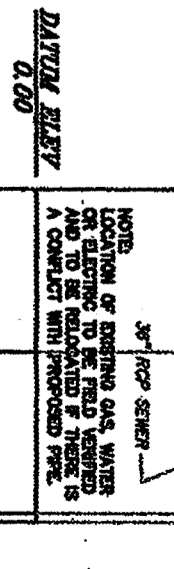


ENGINEERING UTILITY INFORMATION SHOWN ON THIS PLAN IS FURNISHED BY THE UTILITY COMPANIES AND THE ACCURACY THEREOF IS NOT THE RESPONSIBILITY OF PERKS REUTHER ASSOCIATES. IT IS THE RESPONSIBILITY OF THE OWNER AND/OR CONTRACTOR TO OBTAIN THE NECESSARY INFORMATION FROM THE UTILITY COMPANIES AND TO VERIFY THE INFORMATION BEFORE CONSTRUCTION.

PER LENGTHS AND GRADEMENTS ARE CALCULATED TO THE CENTERLINE OF SANITARY AND STORM SEWER STRUCTURES. ACTUAL PIPE LENGTH MAY BE DIFFERENT DUE TO FIELD CONDITIONS. CONSTRUCTION SHOULD BE COMPLETED BY THE CONTRACTOR PRIOR TO CONSTRUCTION.



LOT HOUSING AT



- DESIGN SPECIFICATIONS**
- 1) SANITARY SEWER TO BE 12" DIA. (MIN.) CONCRETE PIPE, 48" COVER TO BE MAINTAINED THROUGHOUT THE ENTIRE LENGTH OF THE SEWER.
 - 2) CONCRETE SEWER, SEWER, AND STORM SEWER SHALL BE 4000 PSI, 4" THICK. ALL CONCRETE SHALL BE FINISHED TO THE TOP OF FINISH ADJUST SLAB SHALL BE 4" TO 2".
 - 3) STORM SEWER (ROUND) TO BE 18" DIA. (MIN.) CONCRETE PIPE, 48" COVER TO BE MAINTAINED THROUGHOUT THE ENTIRE LENGTH OF THE SEWER.
 - 4) SANITARY SEWER TO BE 12" DIA. (MIN.) CONCRETE PIPE, 48" COVER TO BE MAINTAINED THROUGHOUT THE ENTIRE LENGTH OF THE SEWER.
 - 5) STORM SEWER (ROUND) TO BE 18" DIA. (MIN.) CONCRETE PIPE, 48" COVER TO BE MAINTAINED THROUGHOUT THE ENTIRE LENGTH OF THE SEWER.
 - 6) CONCRETE CHAMBERS ARE TO BE USED WHERE THE SEPARATION BETWEEN SANITARY AND STORM SEWERS IS REQUIRED. CHAMBERS SHALL BE 18" DIA. (MIN.) CONCRETE PIPE, 48" COVER TO BE MAINTAINED THROUGHOUT THE ENTIRE LENGTH OF THE SEWER.
 - 7) REMAINING INLET STRUCTURES, STORMWATER MANHOLES, & SANITARY SEWER MANHOLES SHALL BE CONSTRUCTED IN ACCORDANCE WITH M.I.D.O.T. STANDARD DETAILS.
 - 8) TO OPERATIONS RECEIVE TOP OF INLET COATING AND TOP OF CHAMBER, TOP OF INLET COATING SHALL MATCH TOP OF CHAMBER. NO ROOF DRAINS SHALL BE CONNECTED INTO SANITARY SEWER/STORMWATER SYSTEM.
 - 9) ALL PARAPET WALLS SHALL BE PAINTED WITH 4" WIDE WHITE ENAMEL EXCEPT HANDICAPPED STAIRS WHICH WILL BE PAINTED WITH RED ENAMEL.
 - 10) ALL SIGNS SHALL BE MADE OF HIGH INTENSITY REFLECTIVE OR ALUMINUM.
 - 11) ALL SIGNS SHALL BE MADE OF HIGH INTENSITY REFLECTIVE OR ALUMINUM.
 - 12) CONTRACTOR IS TO CONTACT CITY OF CAMDEN DEPT. OF UTILITIES 48 HOURS PRIOR TO CONSTRUCTION OF SANITARY SEWER.
 - 13) ALL WATER AND SEWER PIPING IN THE FRONTYARD SHALL BE CUT, FLOORED, AND ABANDONED IN ACCORDANCE WITH CITY REQUIREMENTS.
 - 14) THE OWNER, OR HIS REPRESENTATIVE, IS TO OBTAIN AN INDIVIDUAL RESPONSIBILITY LETTER FROM THE CITY OF CAMDEN, NEW JERSEY, IN ORDER TO OBTAIN A PERMIT TO INSTALL SANITARY AND STORM SEWER PIPING IN THE FRONTYARD.
 - 15) THE CONTRACTOR MUST CONTACT CAMDEN WATER AND SEWER DEPARTMENT AT THE START OF CONSTRUCTION IN ORDER TO OBTAIN A RECONSTRUCTION PERMIT.

DRAWING NUMBER
C300

APPLICANT
 NEW JERSEY ECONOMIC DEVELOPMENT AUTHORITY

ARCHITECT OF RECORD
 THE WATERFRONT TECHNOLOGY CENTER AT CAMDEN - PHASE 1

CONSULTANTS
 #113198
 RECEIVED JUL 28 2004
 SKANSKA USA
 100% CB

PERKS REUTHER ASSOCIATES
 CONSULTING ENGINEERS

PARSONS CORPORATE CENTER
 115 PENNSYLVANIA, NEW YORK, NY 10119
 PHONE: 646.488.4200
 FAX: 646.488.4202

DRAWING TITLE
 GRADING AND UTILITY PLAN

DRAWING NUMBER
C300

DRAWING ISSUE

NO.	DATE	ISSUE
1	5/27/04	PRELIMINARY
2	6/15/04	NO. 2 REVISION
3	6/17/04	ISSUE NO. 4
4	7/23/04	ISSUE NO. 5

PROJECT
 SCALE: 1"=50'
 03105.00

BRAIN BY
 JTF

CHECKED BY
 JPH